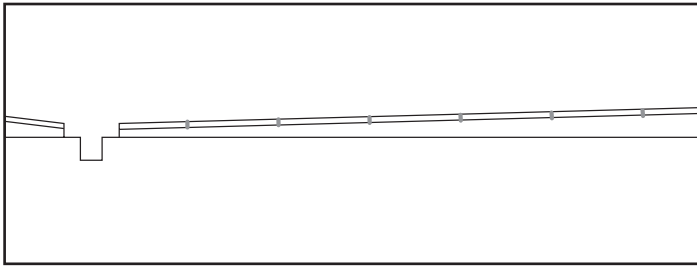
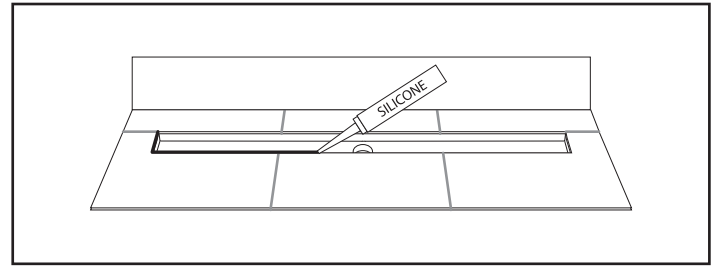


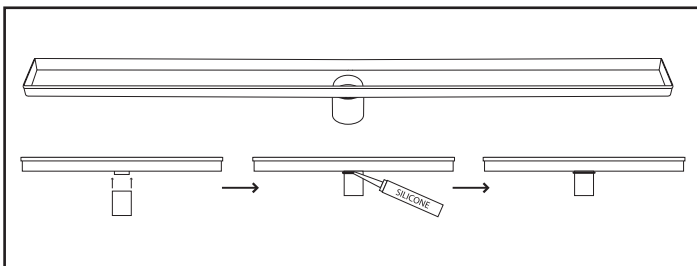
# Channel Drain Installation Guide



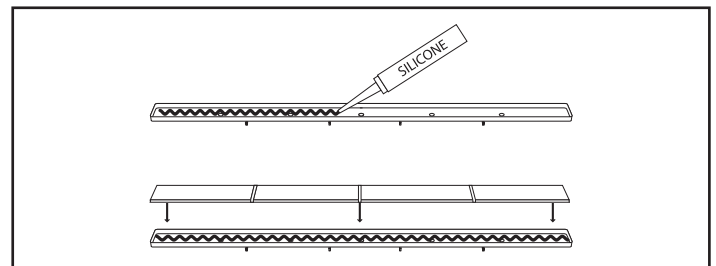
**STEP 1** – Check fall is per specification ie 1% – 10mm:1000mm, note channel position



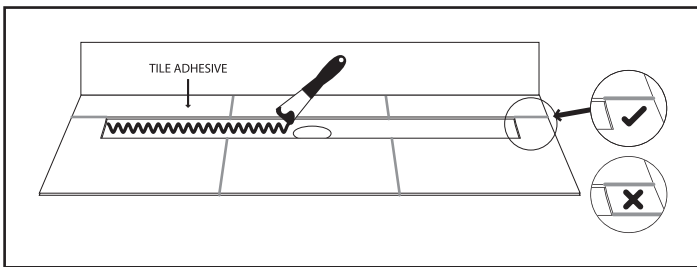
**STEP 5** – Seal around the perimeter of the channel insert (Where the channel insert and tiles meet) with silicone sealant and allow to cure



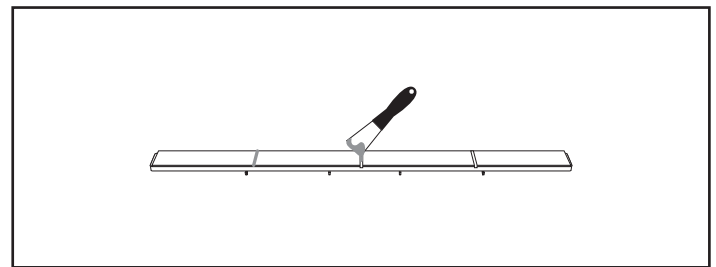
**STEP 2** – Attach stainless sleeve to channel and create a water-tight seal with silicone sealant and allow to cure



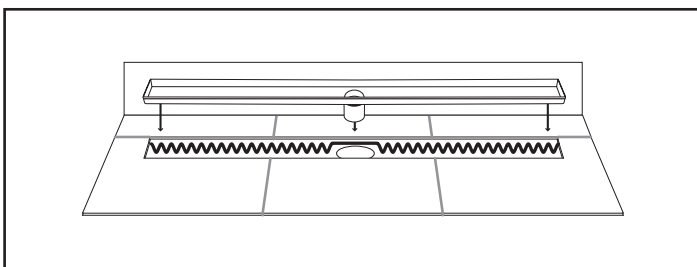
**STEP 6** – Glue tiles into the tile insert using silicone and allow to cure  
Note steps 6, 7 and 8 are for the tile insert model only



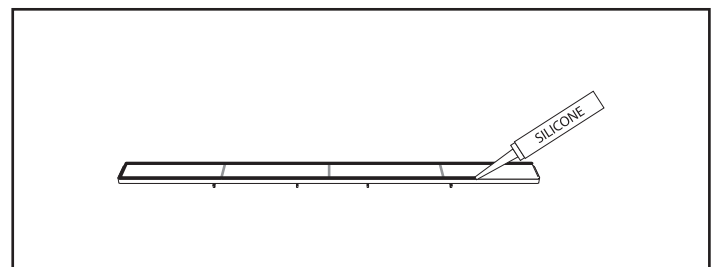
**STEP 3** – Apply an appropriate amount of tile adhesive or silicon to the channel cut-out



**STEP 7** – Once the tiles have been glued in place, grout the tile joints and allow to cure



**STEP 4** – Lower the channel insert into the channel cut-out and allow to cure



**STEP 8** – Seal around the perimeter of the tile insert (Where the tile insert and tiles meet) with silicone sealant and allow to cure

For more information about the Warmup range of products and services visit [www.warmupwetrooms.co.nz](http://www.warmupwetrooms.co.nz)

